



THUNDERBIRD 1981 FORMULA





"As they have so many times in the past, Thunderbird continues as a trend setter creating a level of excellence that other builders constantly strive to emulate."

"If you're looking for a compact recreational powerboat, life on the water couldn't be any finer than at the controls of the Formula One."

Powerboat Magazine



Introduction



Formula by Thunderbird is true value for today and for the future. Handsome design, quality materials and meticulous workmanship, renowned performance and an extensive reputation of many years all assure you of a solid and enduring investment. Equally important is the fulfilling satisfaction of possessing the extraordinary, the finest by any standard.

The responsive Deep-V hull configuration is featured in the Runabout, Performance, Sportsman and Cruiser series. Each of these has been designed and developed to meet the special interests and needs of the individual boater. One of these is sure to be the boat for you.

Formula Runabouts

Page 2



These fun boats from 16' 9" to 20' 2" centerline are ideal for trailering, launching and skimming over the water. Offering a choice of bow rider or conventional deck, all are smooth riding, fast running, and great for skiing.

All tastefully designed. All well done.

You may wish to opt for the exciting color high-lighting of the LS interior package.

Formula Performance

Page 7



If you seek the ultimate in Performance, choose Formula. The thrilling fluid styling and deluxe appointments blend to perfection in the Interceptor, the Liberator and the Formula 302. For the sheer exhilaration of speeding away from it all, accept those admiring stares as tribute to your excellent taste.

Formula Sportsman

Page 10



Especially for the outdoors person, Thunderbird offers thoughtfully developed practical features in the Sportsman series. Sturdy functional details characterize each model while requiring minimum maintenance. For fishing, camping, hunting, or scuba diving, the high level of Thunderbird style and value is maintained.

The traditional performance is very much there. The classic simplicity in cockpit and cabin treatment is definitely designed for extended on-the-water capabilities.

Formula Cruisers

Page 13



Your place on the water may be a Formula Cruiser.

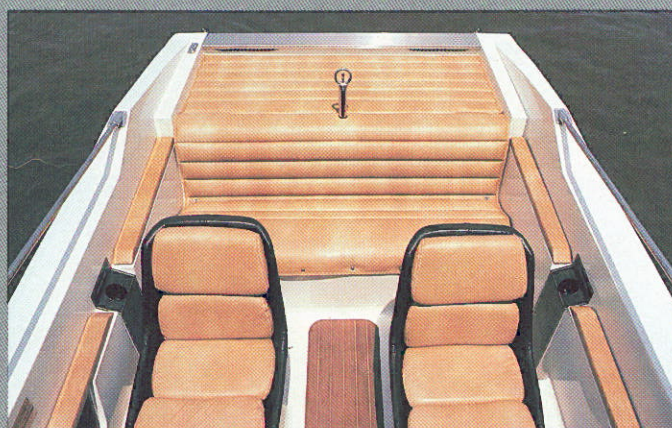
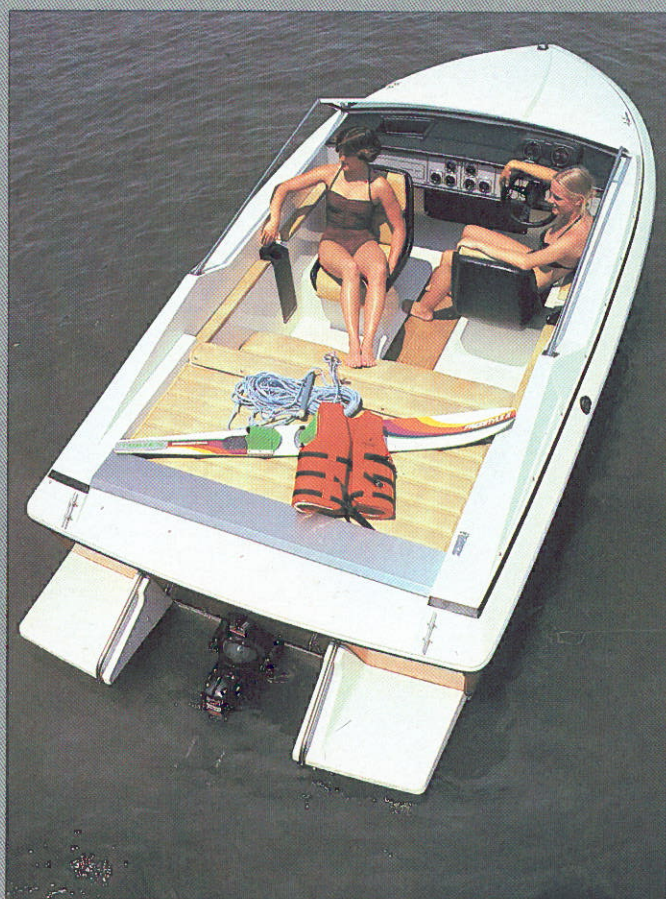
From the simplest well done cuddy cabin to the most complete galley, head and sleeping accommodations, Thunderbird extends comfortable, homey arrangements to the fullest possibilities. Elegant coordinated appointments throughout are unmistakably Thunderbird. The stable wave-smoothing ride is your bonus for selecting

the finest, aesthetically gratifying, truly best value.

Identify models on the following pages by the accompanying symbols to facilitate your choice of the Formula for you.

Formula One

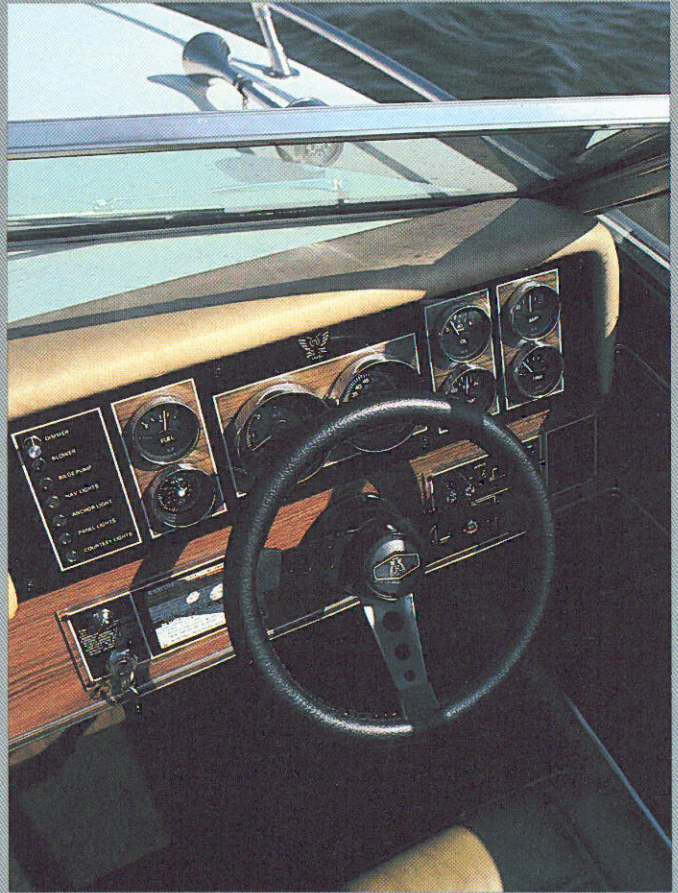
Specifications		
Centerline Length	16' 9"	5.11 m
Maximum Beam	7' 3"	2.21 m
Fuel Capacity	25 Gal.	95 l
Approximate Weight		
Inboard/Outboard (120 Merc)	1850 Lbs.	832 kg
Outboard	1050 Lbs.	472 kg
Maximum Capacity		
Inboard/Outboard	1000 Lbs.	450 kg
Outboard	900 Lbs.	405 kg
Maximum Outboard H.P.	140 H.P.	



Formula 18

Specifications

Centerline Length	18' 2"	5.55 m
Maximum Beam	7' 8"	2.34 m
Fuel Capacity	38 Gal.	144 l
Approximate Weight		
Inboard/Outboard (198 Merc)	2618 Lbs.	1178 kg
Outboard	1650 Lbs.	742 kg
Maximum Capacity		
Inboard/Outboard	1210 Lbs.	545 kg
Outboard	1580 Lbs.	711 kg
Maximum Outboard H.P.	150 H.P.	

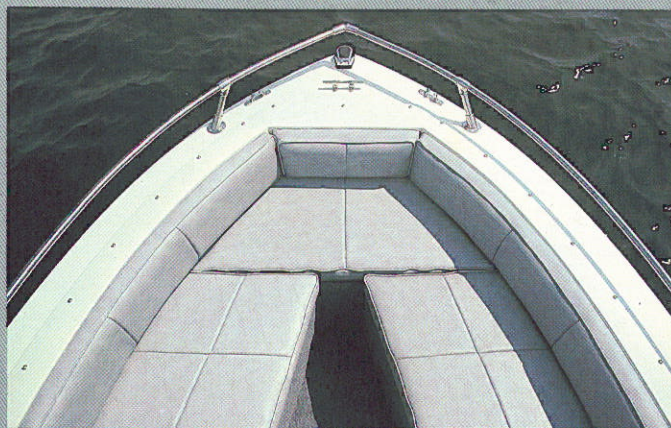


Formula 18

Bow Rider

Specifications

Centerline Length	18' 2"	5.55 m
Maximum Beam	7' 8"	2.34 m
Fuel Capacity	38 Gal.	144 l
Approximate Weight (260 Merc)	2698 Lbs.	1214 kg
Maximum Capacity	1210 Lbs.	545 kg



Formula 20

Specifications

Centerline Length	20' 2"	6.16 m
Maximum Beam	8' 0"	2.44 m
Approximate Weight (228 Merc)	2920 Lbs.	1314 kg
Fuel Capacity	38 Gal.	144 l
Maximum Capacity	1895 Lbs.	853 kg

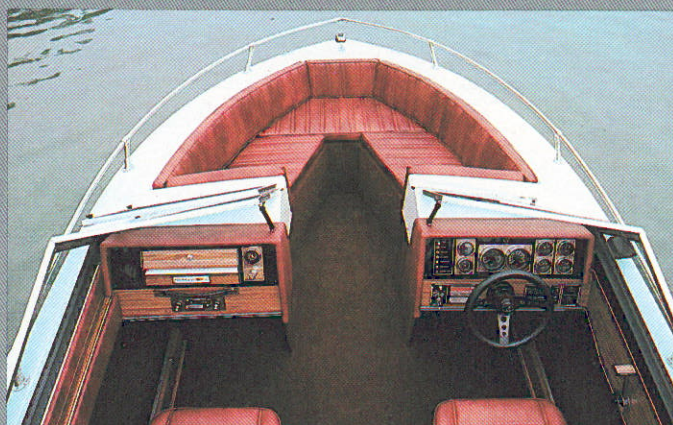


Formula 20

Bow Rider

Specifications

Centerline Length	20' 2"	6.16 m
Maximum Beam	8' 0"	2.44 m
Approximate Weight (260 Merc)	2982 Lbs.	1342 kg
Fuel Capacity	38 Gal.	144 l
Maximum Capacity	1895 Lbs.	853 kg

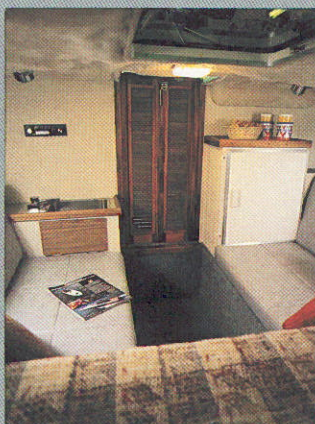
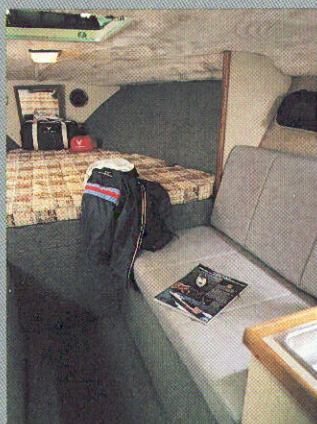


Formula 233

Interceptor LS

Specifications

Centerline Length	23' 3"	7.09 m
Maximum Beam	8' 0"	2.44 m
Approximate Weight (Twin 260 Merc)	5100 Lbs.	2295 kg
Fuel Capacity	80 Gal.	303 l
Maximum Capacity	2190 Lbs.	986 kg

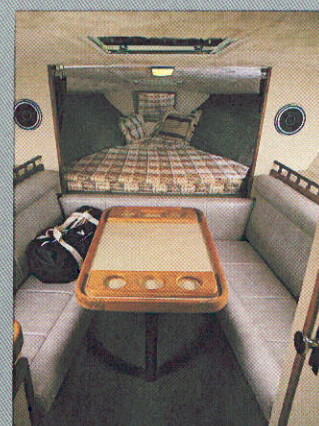


Formula 255

Liberator LS

Specifications

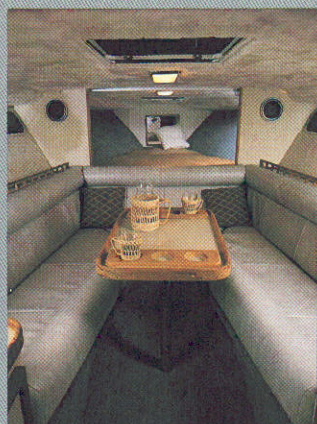
Centerline Length	25' 5"	7.75 m
Maximum Beam	8' 0"	2.44 m
Approximate Weight (Twin 260 Merc)	5622 Lbs.	2530 kg
Fuel Capacity	125 Gal.	474 l
Fresh Water Capacity	25 Gal.	95 l
Maximum Capacity	2500 Lbs.	1125 kg



Formula 302 LS

Specifications

Centerline Length	30' 2"	9.2 m
Maximum Beam	8' 0"	2.44 m
Approximate Weight (Twin 330 Merc)	6950 Lbs.	3127 kg
Fuel Capacity	155 Gal.	587 l
Fresh Water	25 Gal.	95 l



Formula 20

Sportsman

Specifications

Centerline Length	20' 2"	6.16 m
Maximum Beam	8' 0"	2.44 m
Approximate Weight (228 Merc)	3070 Lbs.	1382 kg
Fuel Capacity	55 Gal.	208 l
Maximum Capacity	1925 Lbs.	866 kg

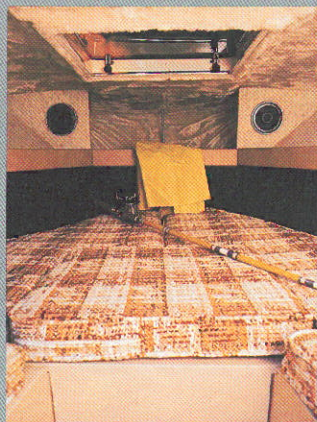


Formula 233

Sportsman

Specifications

Centerline Length	23' 3"	7.09 m
Maximum Beam	8' 0"	2.44 m
Approximate Weight (260 Merc)	4307 Lbs.	1938 kg
Fuel Capacity	100 Gal.	379 l
Maximum Capacity	2190 Lbs.	986 kg

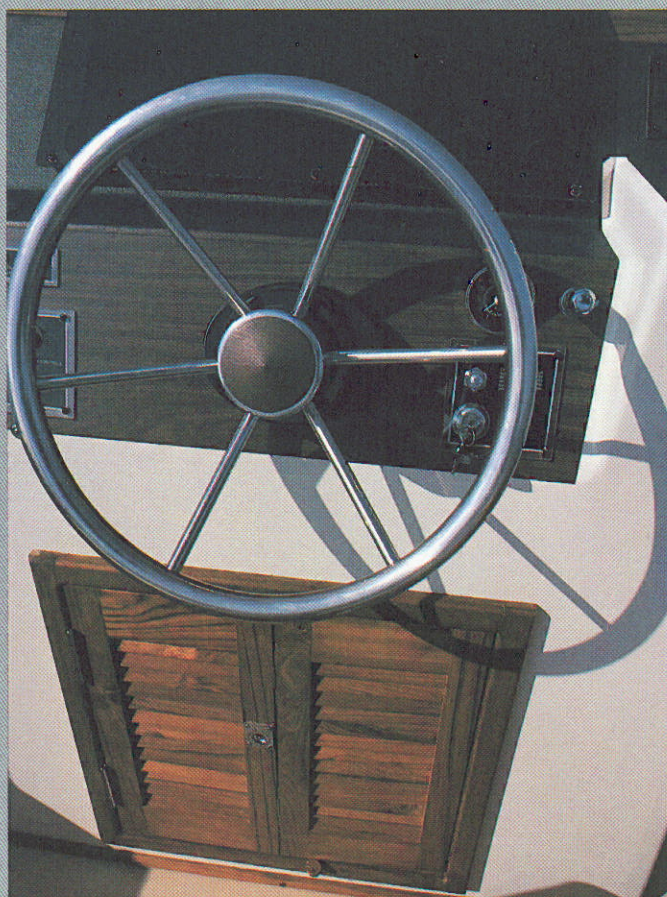


Formula 233

Open Sportsman

Specifications

Centerline Length	23' 3"	7.09 m
Maximum Beam	8' 0"	2.44 m
Approximate Weight (228 Merc)	4195 Lbs.	1888 kg
Fuel Capacity	115 Gal.	435 l
Maximum Capacity	2590 Lbs.	1166 kg



Formula 20 SC

Specifications

Centerline Length	20' 2"	6.16 m
Maximum Beam	8' 0"	2.44 m
Approximate Weight (228 Merc)	2970 Lbs.	1337 kg
Fuel Capacity	38 Gal.	144 l
Maximum Capacity	1925 Lbs.	868 kg

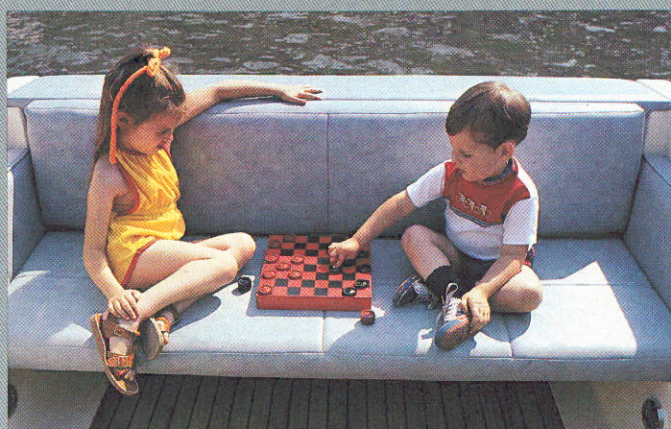


Formula 23 SC

Express

Specifications

Centerline Length	23' 0"	7.01 m
Maximum Beam	8' 0"	2.44 m
Approximate Weight (170 Merc)	3800 Lbs.	1710 kg
Fuel Capacity	85 Gal.	322 l
Maximum Capacity	1800 Lbs.	810 kg

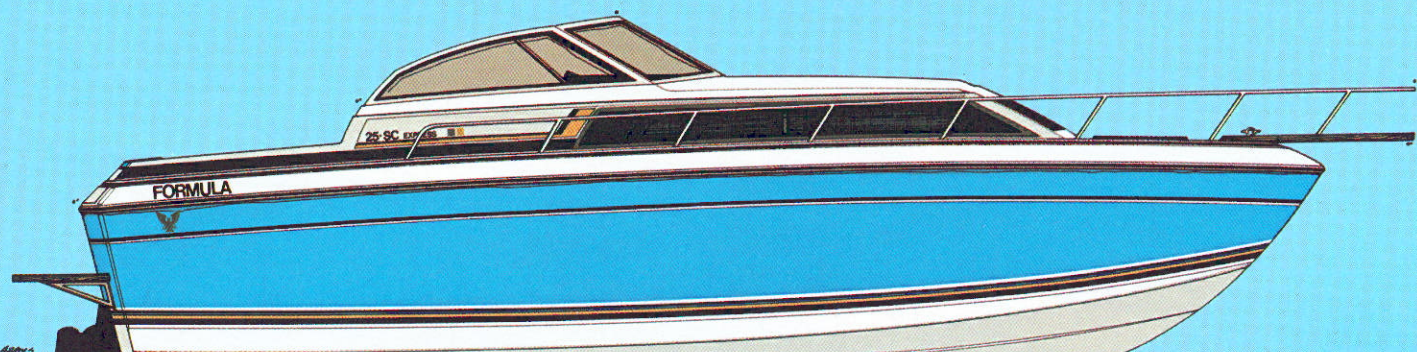
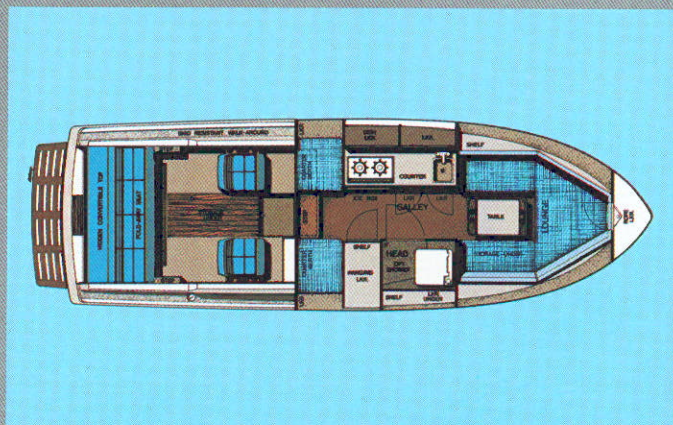
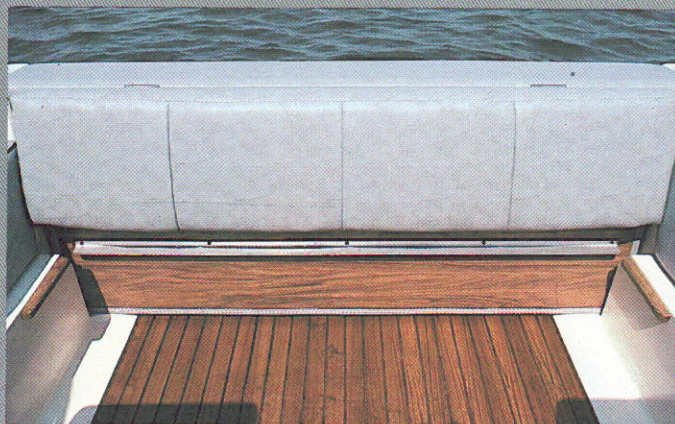


Formula 25 SC

Express

Specifications

Centerline Length	25' 0"	7.62 m
Maximum Beam	8' 0"	2.44 m
Approximate Weight (198 Merc)	4350 Lbs.	1957 kg
Fuel Capacity	85 Gal.	322 l
Maximum Capacity	1800 Lbs.	810 kg

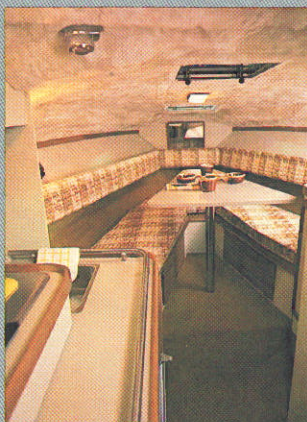
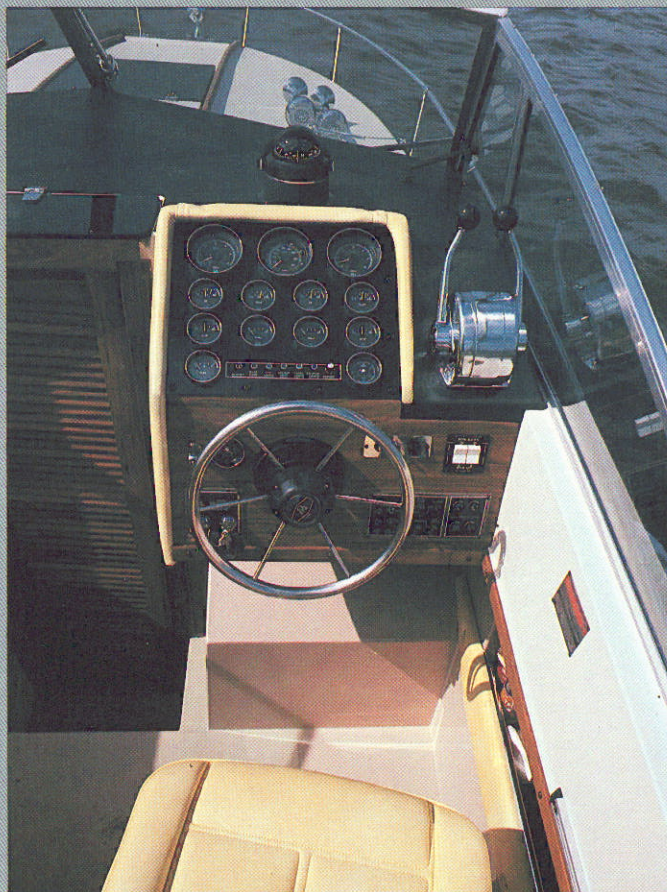


Formula 255

Freedom Cruiser

Specifications

Centerline Length	25' 5"	7.75 m
Maximum Beam	8' 0"	2.44 m
Approximate Weight (260 Merc)	4975 Lbs.	2239 kg
Fuel Capacity	125 Gal.	474 l
Fresh Water	25 Gal.	95 l
Maximum Capacity	2500 Lbs.	1125 kg



Formula 26 SC

Express

Specifications

Centerline Length	26' 2"	7.98 m
Maximum Beam	9' 6"	2.90 m
Approximate Weight (Twin 228 Merc)	6600 Lbs.	2970 kg
Fuel Capacity	132 Gal.	500 l
Fresh Water	25 Gal.	95 l

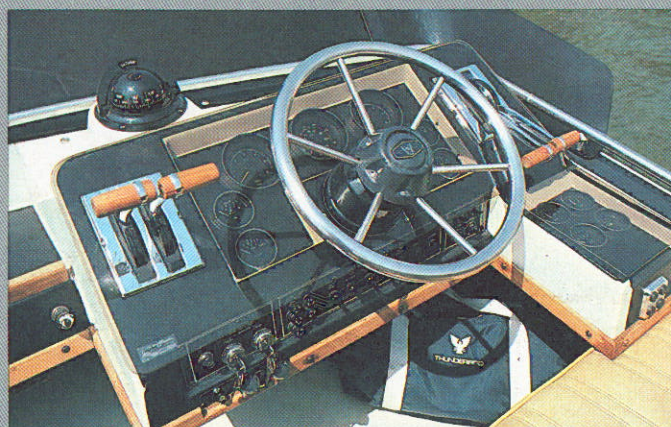
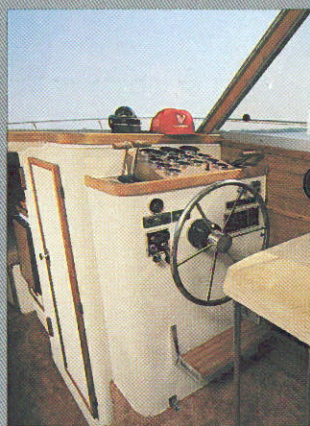


Formula 26

Sedan Cruiser

Specifications

Centerline Length	26' 2"	7.98 m
Maximum Beam	9' 6"	2.90 m
Approximate Weight (Twin 228 Merc)	7200 Lbs.	3240 kg
Fuel Capacity	132 Gal.	500 l
Fresh Water	42 Gal.	159 l



Formula 402 SC1

Specifications

Centerline Length	40' 2"	12.24 m
Maximum Beam	9' 4"	2.84 m
Approximate Weight	9800 Lbs.	4410 kg
Fuel Capacity	200 Gal.	757 l
Fresh Water	42 Gal.	159 l



Innovations In Excellence

The best of materials and components are secured for the manufacturing of all Formula models.

Thunderbird stresses a strong commitment to innovative design, research and development. Many features originated in Thunderbird's R&D laboratory later appear throughout the boating industry as "original." Thunderbird copies no one and completely designs and engineers all its Formula models.

Because Thunderbird employs an exclusive designer, the distinctive styling of all Formulas retains continuity. Designer and R&D engineers are constantly researching new products which may be suitable for future Formula models.

Before a hull or deck mold is gel coated, it is carefully inspected. Every Thunderbird production mold reflects a high gloss at all times. To insure a good mold surface, faithful mold maintenance is necessary. All molds receive a new coat of wax after every 5 parts and are completely stripped after 15 parts before rewaxing with 3 new coats.

Formula gel coat application begins in a clean, dust free environment. Applied gel coat thickness measures 20 mils for maximum depth of color.

Low exotherm resins are used in the laminating process, minimizing heat distortion and resulting in an improved cosmetic finish.

Structural components and stringers are installed while the boat is in the mold and are securely fastened by Fab-Mat™, a bonded mat and woven roving of superior strength. All structural components are fiber glassed and resin coated for added strength and water protection.

The safety of you and your passengers is considered top priority. Formula hulls are not only foamed for safety but also for quietness and added strength. Foam injection occurs while the hull is in its mold . . . preventing any possible distortion.

The renowned luster of a Formula finish is the result of NPG® gel coat, a tough material with unexcelled color retention and finish longevity.

Thunderbird offers you one of the greatest selections of power options available. And engines are installed in strict accordance to manufacturer's specifications. Nuts and bolts are torqued to the recommended tightness.

Fuel tanks are properly placed and secured amidships, not in the bow area. Fuel lines meet and exceed all BIA and Coast Guard regulations and all fuel systems undergo a pressure check to insure against fuel leakage.

Formula windshields are custom designed to meet strict Thunderbird specifications. All glass windshields are tinted and are safety plate.

Hardware is of the highest quality.

Thunderbird has chosen stainless steel and aluminum for virtually all deck and hull hardware. Stainless steel is a plus factor for salt water boaters and increases the resale value of the boat. All deck hardware is bolted in place using stainless steel fasteners. The shaping of stainless steel requires a special touch. Bow rails, ladders and all critical contours are hand formed and drilled by Thunderbird craftsmen.

The warmth and nautical character of authentic teak is appointed tastefully throughout all models. Every inch of teak is fully immersed, not wiped, in a preservative . . . assurance that its richness is protected. Our carpentry department planes and finishes all teak for specific boat models.

All sub-assemblies, bulkheads, acrylic hatches, and galley units are "in-house" constructed to assure quality and to offer you a greater selection of interior colors.

When deck and hull are joined, the gunwale is silicone sealed. After gunwale extrusion is screwed and bolted in place with stainless steel fasteners, a second silicone seal is beaded around the gunwale to prevent the entry of water. Gunwale inserts add bumper protection.

During final inspection, all engine gauges are checked against test instrument panels for correct calibration. A check list is scrutinized to assure all components and accessories are installed as ordered.

When properly maintained and serviced, resale value of Formulas frequently equals the original purchase price. Thunderbird's reputation for quality allows its buyers to obtain excellent long term financing. A Thunderbird survey of its dealers in major metropolitan areas has confirmed the availability of financing from 5-10 years on most small Formulas and up to 15 years on larger Formulas. This has allowed many boating enthusiasts to invest in a Formula who before thought it wouldn't fit into their budgets. Investing in a Thunderbird is an investment in prestige and the knowledge you own the finest.

Attention to quality in every detail is a fact of life in the daily manufacturing processes at all Thunderbird facilities. Thunderbird design, engineering and hand craftsmanship are combined to produce the ultimate in safety, durability, comfort, quality and high performance.

FORMULA FOR PARADISE

"The Formula 402 was waiting for us, fueled and ready, at her Miami slip. Her hull and engine installations were pure offshore-racer, but her accommodations were more like those of a fancy hotel—thick upholstery everywhere, large head/vanity/shower, excellent stereo system. All the special effects one could ask for."

"The 402 behaved flawlessly—like a Land Rover during the wild trip out (a trifle stiff, but sure-footed) and like a Rolls Royce Corniche on the way back (gliding, soft, luxurious)."

"The boat was our diving platform, our entertainment center, and our home for two days under the sun."

Boating Magazine



LIMITED WARRANTY

Thunderbird Products Corporation boats are warranted to the original retail purchaser to be free from defects in materials and workmanship. This warranty is for a term of one year beginning with the delivery of the boat to the original retail purchaser.

During this period, warranty repairs will be made without charge by the selling Thunderbird Dealer at that dealer's store or service center, or at Thunderbird's option, at one of the Thunderbird manufacturing plants. Transportation charges on Thunderbird Products Corporation boats to and from the selling dealer's service center or to and from the Thunderbird Factory will be the responsibility of the owner. All repairs made under the terms of this warranty are subject to the authorization of factory-trained personnel whose decision will be final.

This warranty does not apply to —

Carpet, upholstery, canvas, windshield breakage or the cracking, crazing, discoloration or blistering of gel coat finishes; Costs for haul out, launch, towing or storage charges, inconvenience, or loss of time or income.

Equipment and accessories not manufactured by Thunderbird Products Corporation (engines, outdrives, instruments, controls, propellers, optional electrical equipment and batteries are covered by warranties of the manufacturer supplying those units);

Installation of engines by persons other than Thunderbird Products Corporation, components which have been altered, or the misuse, neglect or lack of proper maintenance of the boat; or

The achievement of any particular performance.

The Warranty provided herein is in lieu of all other express warranties and may not be extended or modified by anyone. Any implied warranties, including any implied warranties of merchantability or fitness for a particular purpose are limited in duration for the period of one year from the date of delivery. All other obligations or liabilities, including liability for consequential damages on the part of the manufacturer, and the dealer, are hereby excluded.

To attain higher quality and improve features, we reserve the right to change any specifications or prices when necessary.



CORPORATE AND
NORTHERN OFFICES
P.O. Box 501
Decatur, Indiana 46733
219/724-9111

SOUTHERN OFFICE
14100 Biscayne Blvd.
North Miami, Florida 33181
305/945-7611

WESTERN OFFICE
P.O. Box 2577
Paso Robles, California 93446
805/238-1866

